



Jack Capon Villa

2216 Lincoln Avenue, Alameda, CA

Project Data

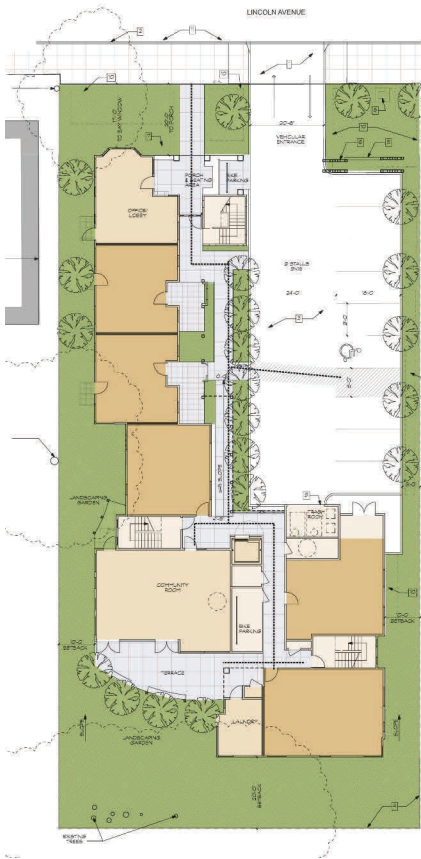
Project Type: New Construction, Special Needs
 Affordable Rental @ ≤ 50% AMI
 Units & Type: 19 units (1- & 2- Bedrooms)
 On-Site Amenities: Community Room, Computer Lab,
 Lobby, Manager Office, Central Laundry
 Anticipated Constr. Period: 2012
 Site Area/ Density: 40 Units/ Acre
 Total Site Area: Approx. 20,907 sf (.48 acres)
 Total Building Area: 19,525 sf
 Parking: 8-9 spaces
 Total Development Cost: TBD
 Funding Sources: TBD

Co-Developers: Satellite Housing & Housing Consortium of the East Bay
 Architect: Van Meter Williams Pollack Architects
 General Contractor: Segue Construction
 Owner: HCEB & Satellite Housing
 Property Manager: HCEB

Primary Jurisdiction Contact:
 Debbie Potter, Housing Development & Programs Manager, City of Alameda
 dpotter@ci.alameda.ca.us
 (510) 747-4305

Co-Sponsors Housing Consortium of the East Bay (HCEB) and Satellite Housing Inc. (Satellite), in partnership with the City of Alameda and the City of Alameda Housing Authority, propose to develop, construct and operate 19 units of affordable, accessible housing for low-income households with developmental disabilities. The development will be comprised of 1- and 2-bedroom unit, with one 2-bedroom unit dedicated to an on-site property manager. The development will also include offices for site staff and numerous community spaces.

The entire site and the proposed apartment building will be designed with accessibility features, to provide the greatest degree of independence possible for the residents and visitors that have mobility impairments, hearing and vision impairments, and motor skill challenges.



VIEW FROM BACK YARD



VIEW AT ENTRANCE



VIEW FROM PARKING AREA



VIEW FROM DOWN THE STREET

